

GC Engineered Solutions

Light Hydrocarbon Analyzer Model 4037



- Analyzes a wide range of gaseous and liquid light hydrocarbon samples like LPG
- Fully-automatic operation
- All hydrocarbons from methane to hexane are analyzed. Complete separations of all possible compounds are obtained in approximately 20 minutes. The analysis usually includes a column-temperature program
- This analyzer cannot be used for all samples. Two very good applications are for propylene/butylenes manufacturing and analysis of butane streams, which are free of compounds that irreversibly poison the Alumina PLOT column (NH_3 , H_2S)
- Liquid-sampling valve mounted at ambient temperature and external valve oven design for the gas-sampling valve allows for full-range temperature programming for column reconditioning (removing CO_2 and H_2O)
- Includes a secondary filter and back-pressure regulation for proper liquid-sample introduction, plus a vaporization zone for proper liquid-sample injection
- Sample types analyzed: gas, liquid, pressurized liquid

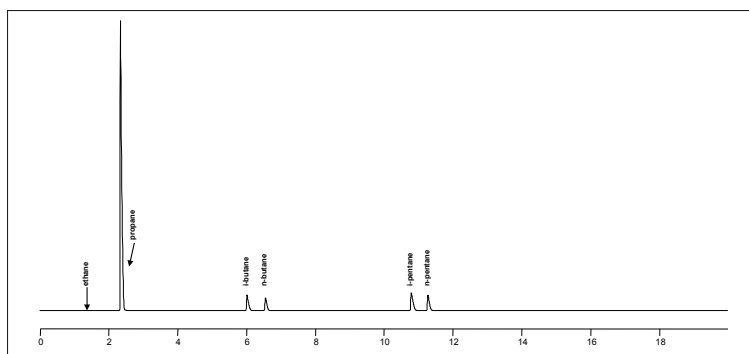
Detected Compounds

- All hydrocarbons from methane through hexane

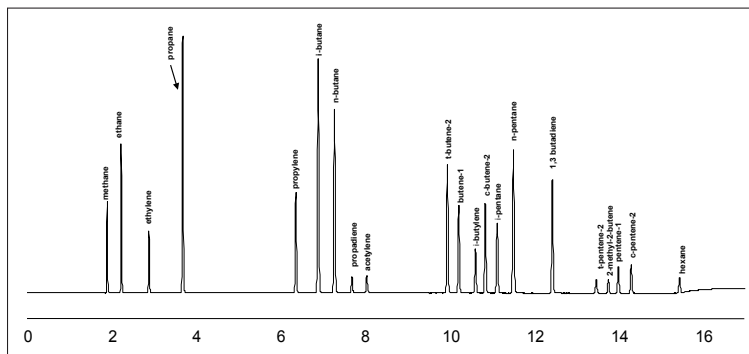
Key Features

- Meets:
 - ASTM D2163
 - ASTM D2593
 - ASTM D2712
 - ASTM D2820
 - ASTM D4424
 - ISO 7941
- Guaranteed detection levels (based on individual components without interference from neighboring peaks):

Light Hydrocarbons (FID)	Min (ppm)
All hydrocarbons from methane through hexane (gas analysis)	0.1
All hydrocarbons from methane through hexane (liquid analysis)	0.25



Liquid Propane by FID (liquid channel)



Light Hydrocarbons by FID (gas channel)