

GC Engineered Solutions

Fixed Gas Analyzers -
Models 4032/4033/4034

- Rugged and simple packed-column technology
- Models 4032 and 4033 are single-channel, thermal conductivity detector analyzers. Model 4034 is dual channel, with two thermal conductivity detectors
- Detection limits lower than 10 ppm are possible in some cases (requires custom quotation). Some limitations exist with certain combinations of compound levels present. Information on the complete sample matrix is required to determine true detection and measurement ranges.
- Models 4032 and 4033 have the ability to be combined with other models in a custom analyzer for cost savings
- Sample types: Gas

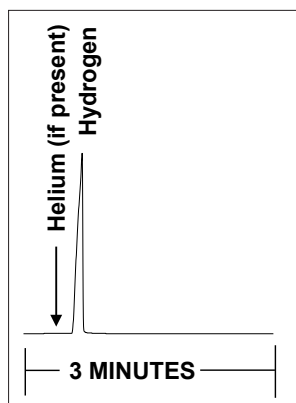
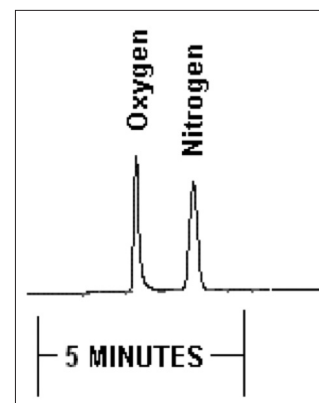
Detected Compounds

- Model 4032: He, H₂
- Model 4033: O₂, N₂
- Model 4034: He, H₂, O₂, N₂

Key Features

- Meets:
 - ASTM D1945
 - ASTM D1946
- Guaranteed detection levels (based on individual components without interference from neighboring peaks):

Model 4032 (TCD - Analysis 1)	Min (ppm)
He and H ₂	10
Model 4033 (TCD - Analysis 2)	Min (ppm)
O ₂ and N ₂	25
Model 4034 (TCD/TCD Analysis 1 and 2)	Min (ppm)
He and H ₂	10
O ₂ and N ₂	25

Models 4032 and 4034 –
Analysis 1 (TCD)Models 4033 and 4034 –
Analysis 2 (TCD)